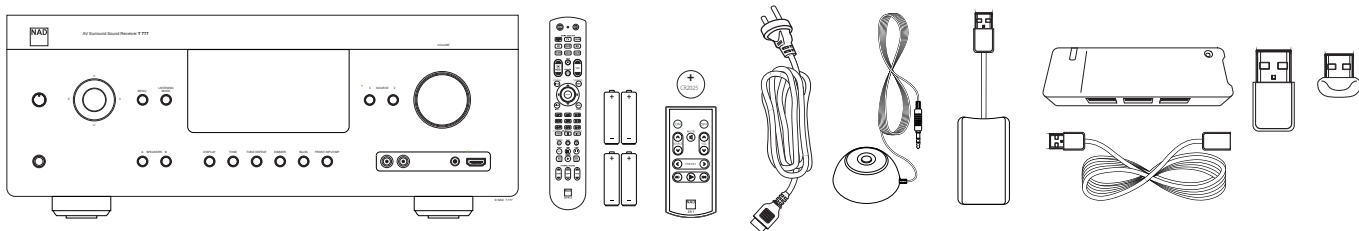


NAD T 777 AV Surround Sound Receiver

Quick Setup Guide

WHAT'S IN THE BOX



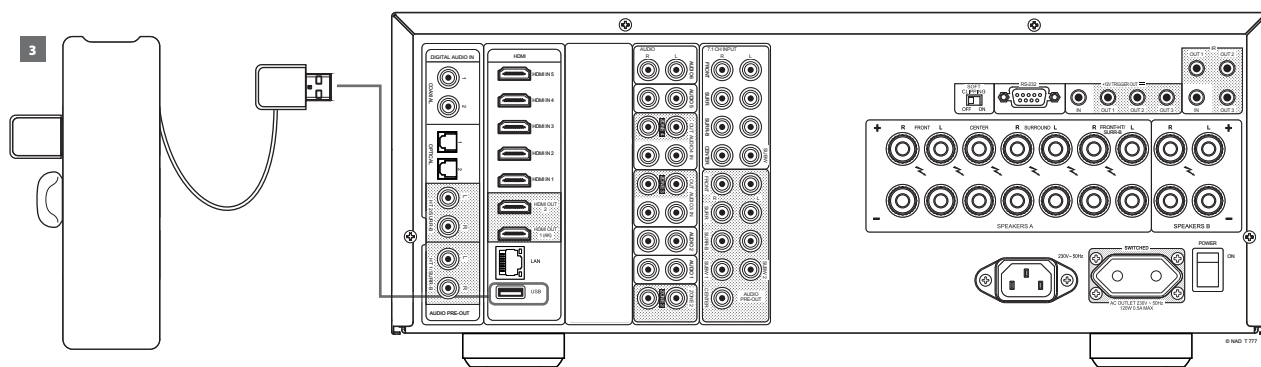
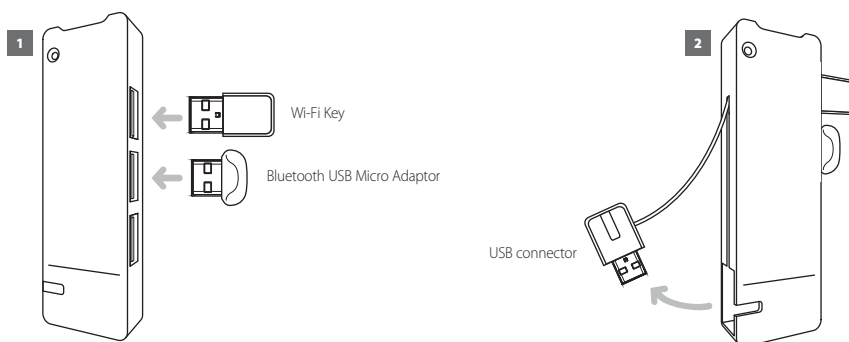
NOTES

- Download the latest T 777 Owner's manual from the NAD website: nadelectronics.com
- Refer to the owner's manual for more information about your T 777 including further setup guidelines, operation, BluOS configuration and other features.

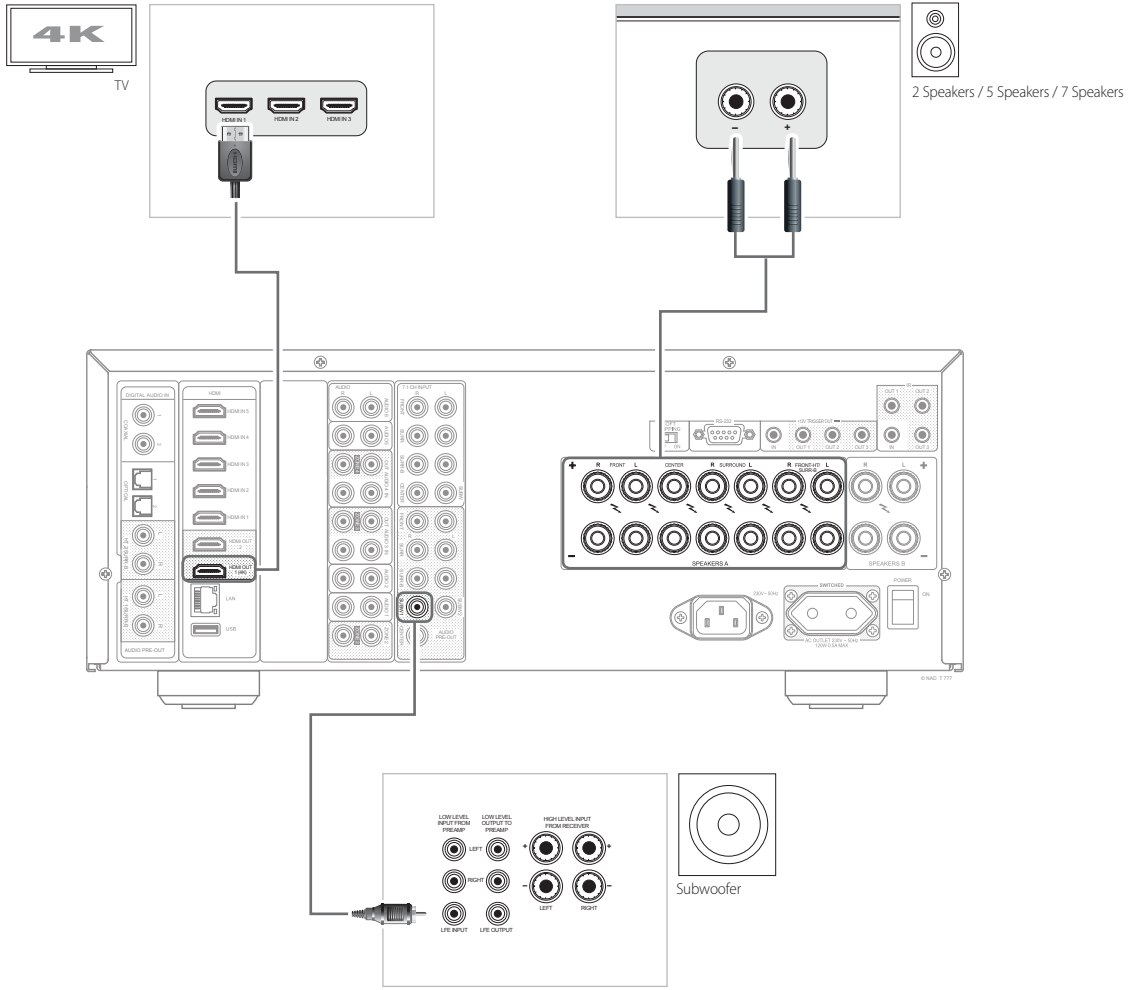
INSTALL BluOS KIT

NOTES

- The Wi-Fi dongle and Bluetooth USB Micro Adaptor can be connected to any of the 4 ports of the USB hub. If wireless connectivity is poor, connect Wi-Fi dongle to the supplied extension cable and straighten out for better reception.
- Refer to T 777 owner's manual for guidelines about network configuration and BluOS operation.

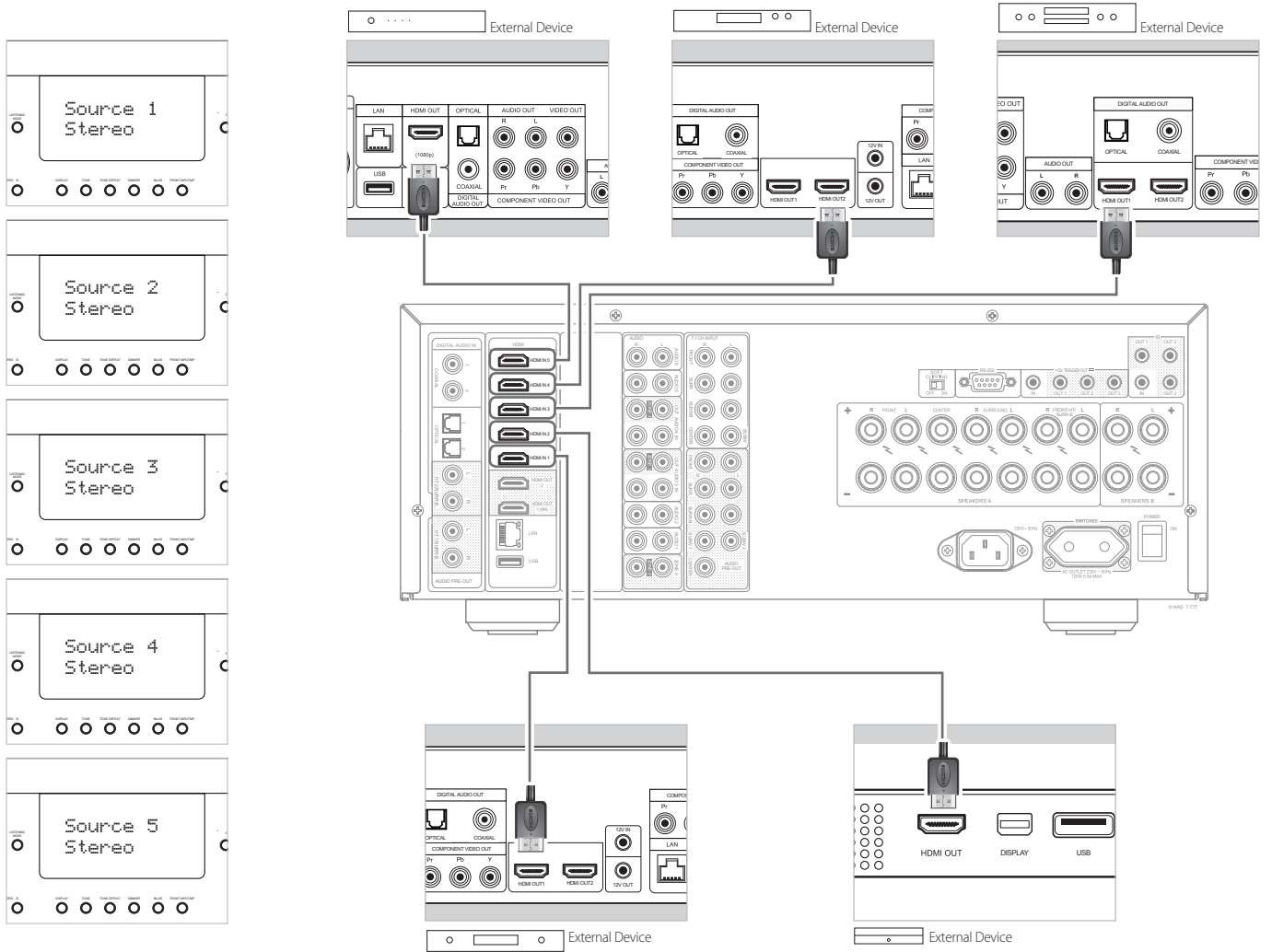


CONNECT SPEAKERS, SUBWOOFER AND TV

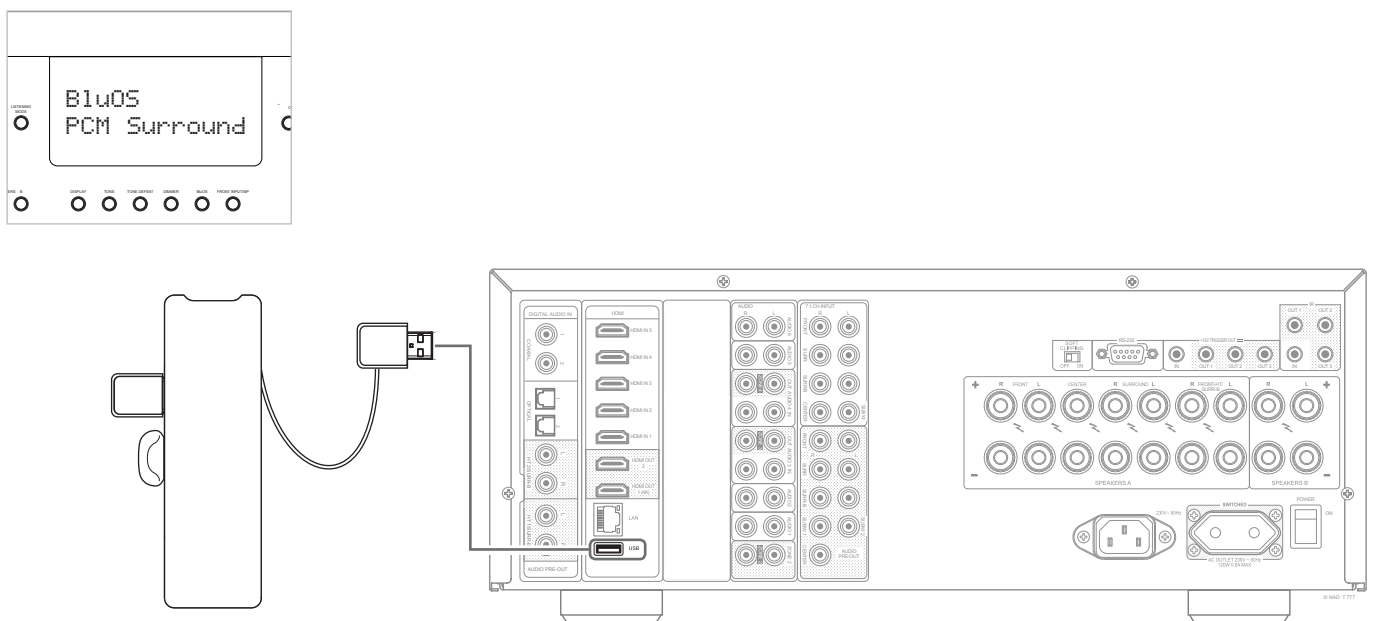


SUGGESTED SETUP CONNECTIONS

SOURCE 1 - 5 (HDMI)



SOURCE 6 - BluOS



START UP!

