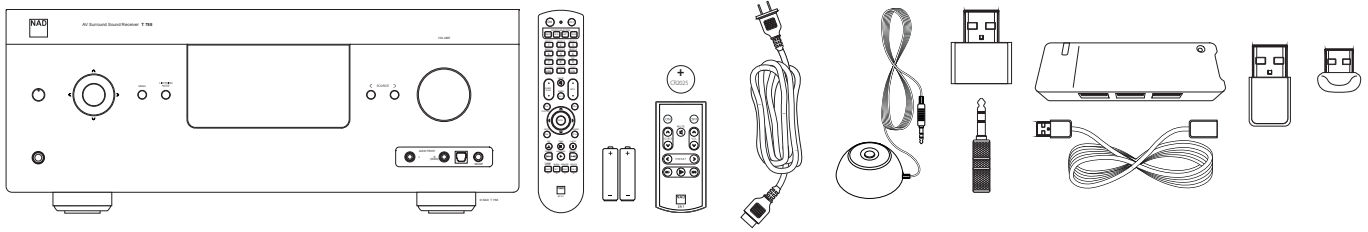


NAD T 758 AV Surround Sound Receiver

Quick Setup Guide

WHAT'S IN THE BOX



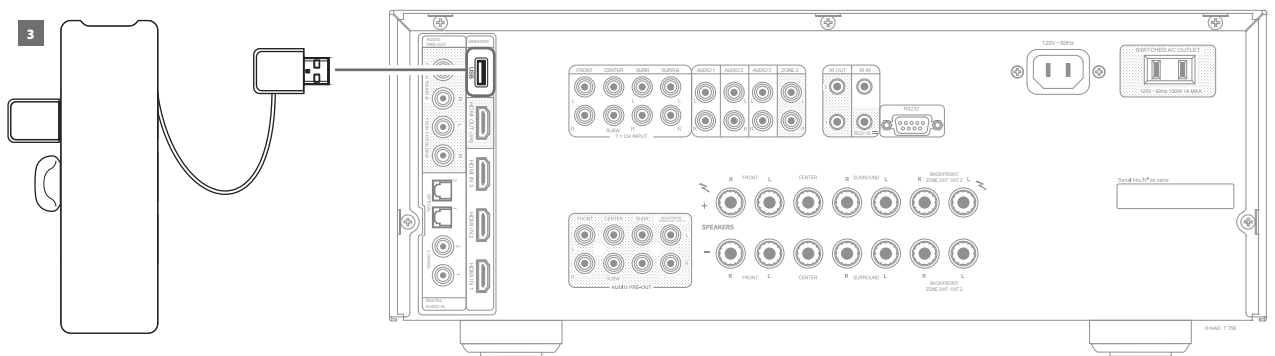
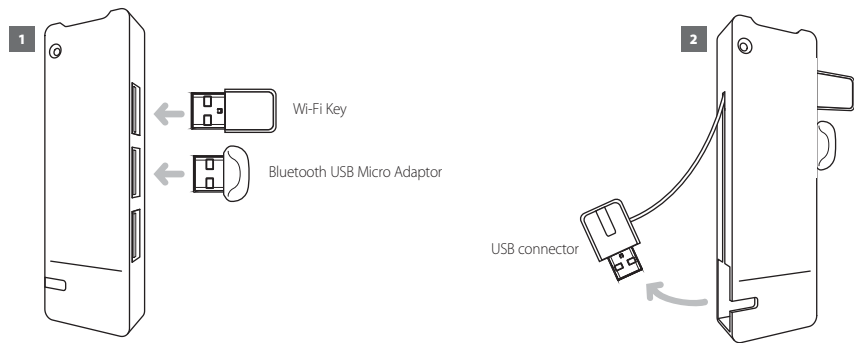
NOTES

- Download the latest T 758 Owner's manual from the NAD website nadelectronics.com.
- Refer to the owner's manual for more information about your T 758 including further setup guidelines, operation, BluOS configuration and other features.
- The information provided in this Quick Setup Guide maybe subject to change without notice. Check the NAD website for the latest T 758 Quick Setup Guide.

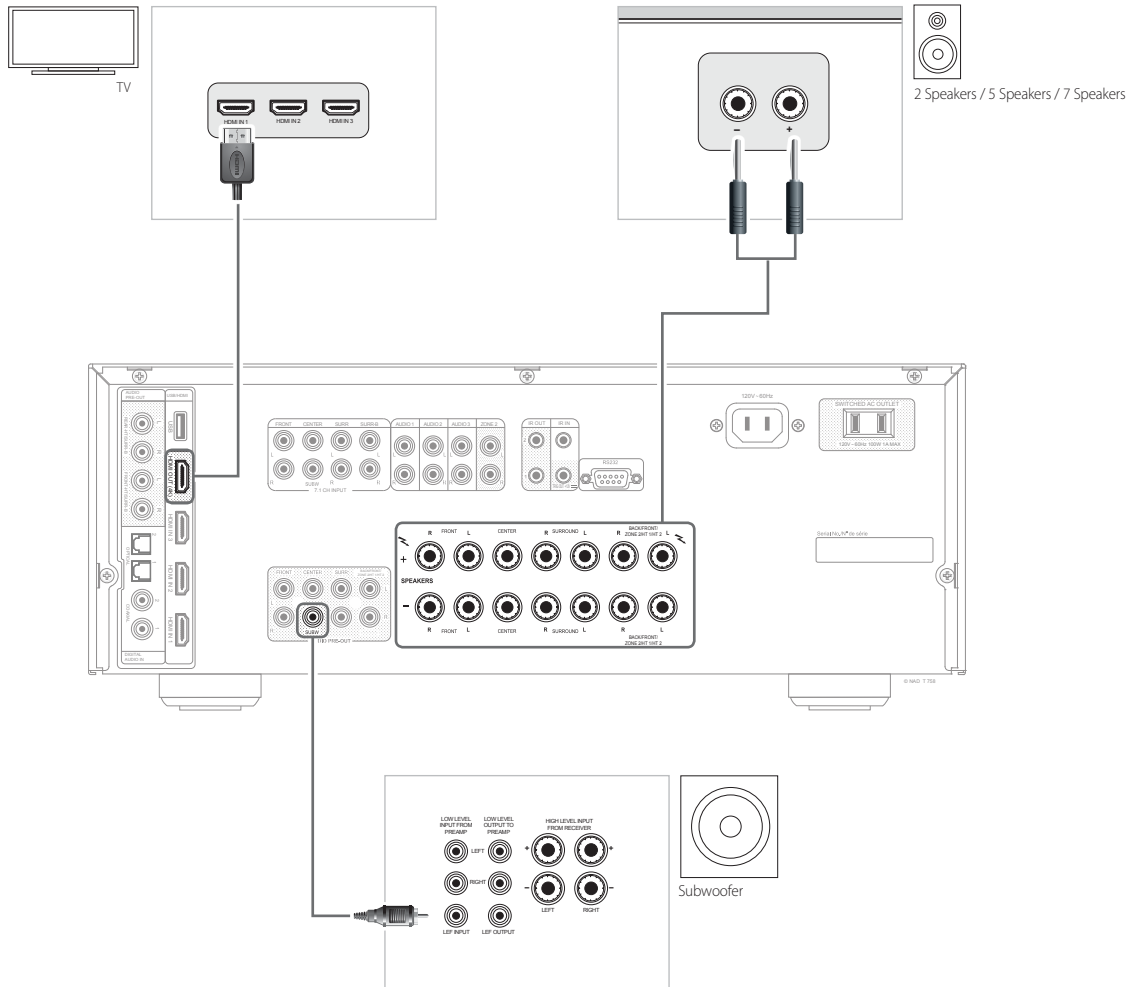
INSTALL BluOS KIT

NOTES

- The Wi-Fi dongle and Bluetooth USB Micro Adaptor can be connected to any of the 4 ports of the USB hub. If wireless connectivity is poor, connect Wi-Fi dongle to the supplied extension cable and straighten out for better reception.
- Refer to T 758 owner's manual for guidelines about network configuration and BluOS operation.

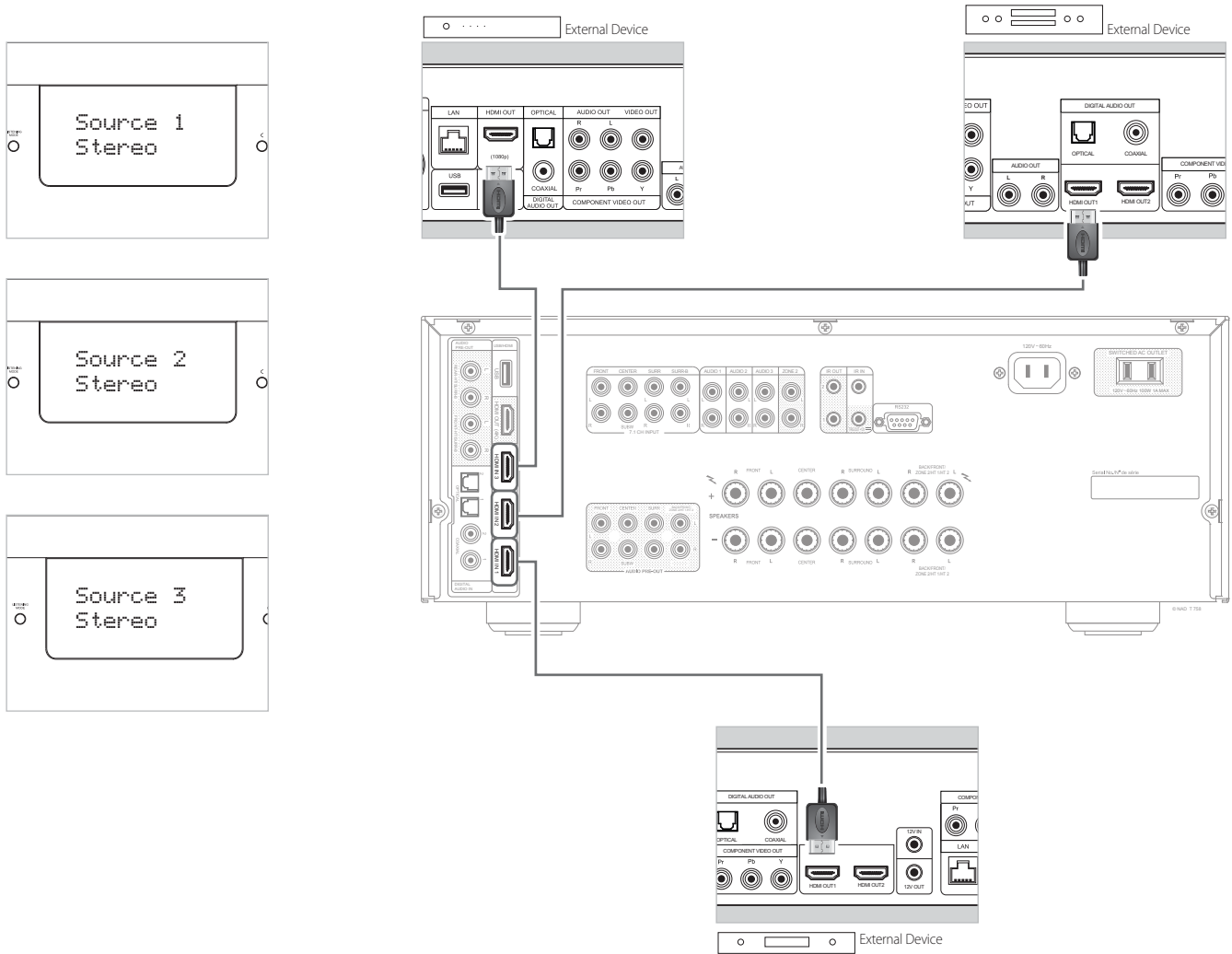


CONNECT SPEAKERS, SUBWOOFER AND TV

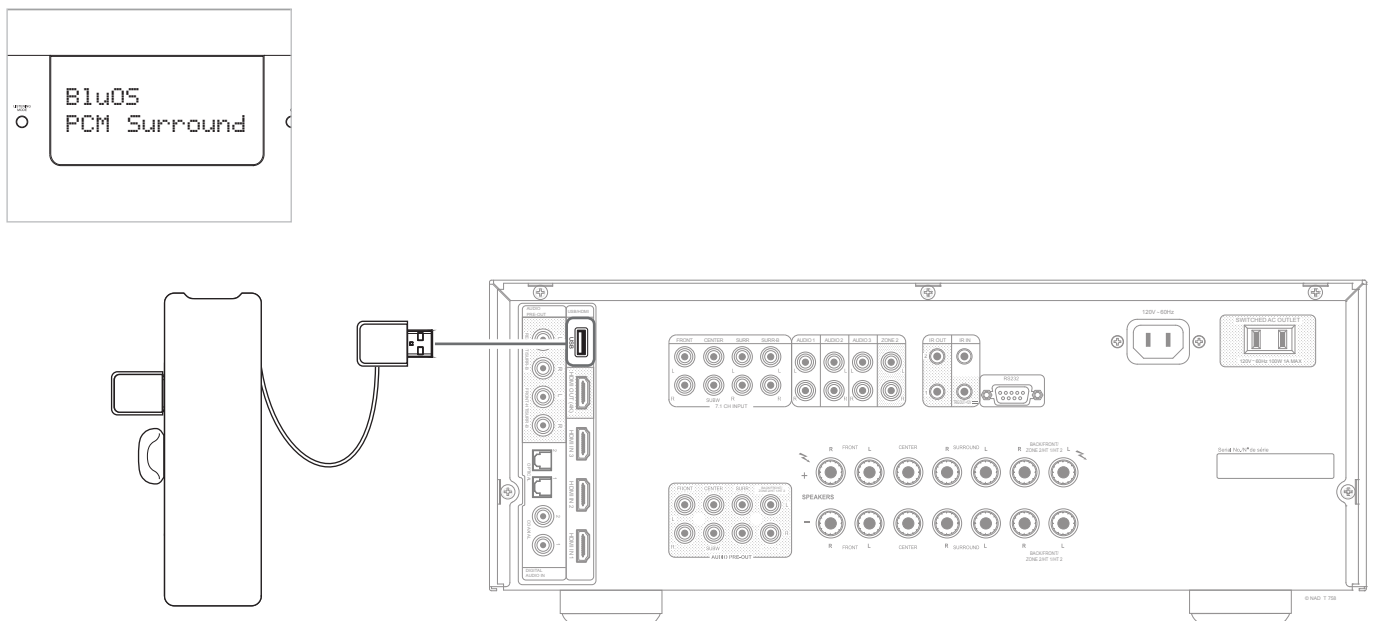


SUGGESTED SETUP CONNECTIONS

SOURCE 1, SOURCE 2 AND SOURCE 3 – HDMI



SOURCE 6 – BluOS



START UP!

