



CI 980 Multi-Channel Amplifier



Top-of-the-line, eight channel amplification for custom installation and distributed audio systems. Outfitted with the latest high-efficiency switching technology, the component is smaller and lighter, while maintaining low distortion and impedance, even with long wire runs.

RELIABLE, FLEXIBLE, EASY ▼

Reliability, flexibility, and ease of installation of the CI 980 is unsurpassed. Its design is space-efficient and will fit into standard racking units with rack ears and Phoenix speaker connection blocks. The amplifier is fully protected from short circuit and overheating, and automatically restores operation after a condition is rectified. The CI 980 is incredibly flexible, with selectable local or global inputs and the ability to bridge channels to create a single high-power channel.

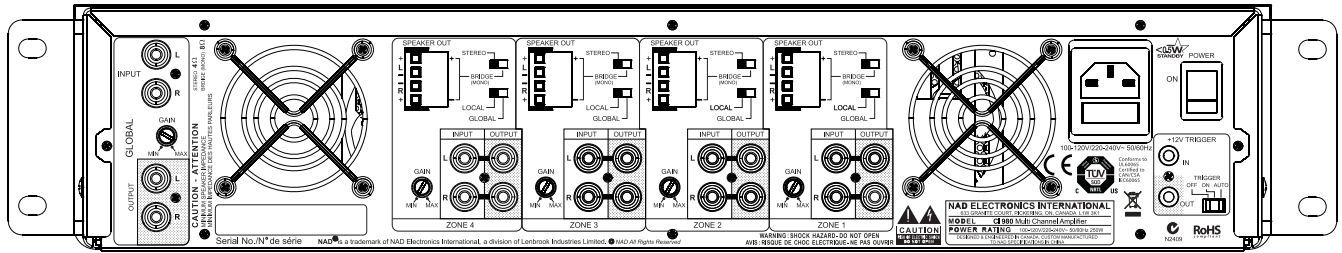
EFFICIENT WITH LOW NOISE AND DISTORTION ▼

Choose between a DC trigger or a signal-sensing turn on with auto shut-off to make integration easy. The signal sensing circuit employs a sophisticated music sensing circuit to prevent the false triggers common with noisy source components or other types of interference noise like RF leakage or ground loops.

FEATURES & DETAILS

- ▶ Eight channels of clean, low distortion power set up in four stereo zone configuration
- ▶ 50 W x 8 @ 8 Ohms; 60W x 8 @ 4 Ohms; 120W @ 8 Ohms in Bridge Mode
- ▶ Universal voltage to accommodate marine or avionics installations
- ▶ Compact 2U rack height with rack ears
- ▶ Phoenix speaker connection blocks
- ▶ Detachable power cable for easy service and upgrades
- ▶ Indicator lamps for each zone that show protection status and amplifier clipping
- ▶ <0.5 W standby consumption
- ▶ <0.03% THD; <0.04% IMD (SMPTE, CCIR)
- ▶ >86dBA referenced to 1W

CI 980 Rear Panel ▼



Specifications CI 980 ▼

Continuous Output Power	
8 Ohms	8 x 50W (ref. rated THD, 20Hz-20kHz, all channels driven)
4 Ohms	8 x 60W
8 Ohms (Mono, Bridge Mode)	120W
Rated THD	<0.03% (ref. 20Hz-20kHz)
(250mW to rated power, CCIF IMD, DIM 100)	
Clipping Power	>155W (ref. 1kHz, 8 Ohms, 0.1% THD)
Damping Factor	>150 (ref. 8 Ohms, 50Hz and 1kHz)
Input Sensativity	1.1V (ref. rated power)
Voltage Gain	33dB
Frequency Response	±1dB (ref. 20Hz-20kHz)
Signal/Noise Ratio, A-Weighted	>80dB (ref. 1W) >100dB (ref. 50W)
Minimum Input Signal to trigger (auto sense mode)	>20mV
Time to Automatic Standby (without signal at input sense mode)	10 minutes

GENERAL

Rated Power	600W (120V 60Hz, 230V 50Hz)
Idle Power	<26W
Standby Power	<0.5W
Dimensions (W x H x D)*	483 x 105 x 323mm (19 x 4 3/16 x 12 3/4")**
Net Weight	5.72kg (12.6lb)
Shipping Weight	7.1kg (15.65lb)

* Gross dimensions include feet, extended buttons and rear panel terminals. ** Non-metric measurements are approximate. NAD Electronics will not assume any liability for errors being made by retailers, custom installers, cabinet makers, or other end users based on information contained in this document. Note: Installers should allow a minimum clearance of 55mm for wire/cable management.



NAD Electronics International reserves the right to change specifications or features without notice. NAD is a registered trademark of NAD Electronics International. All rights reserved. No part of this publication may be reproduced, stored, or transmitted in any form whatsoever without the written permission of NAD Electronics International. © 11/17 <!-- Generator: Adobe Illustrator 22.0.1, SVG Export Plug-In -->