



M10 V2 Internet Update Guidelines



SETUP REQUIREMENT

- Go to the M10 V2 product page at www.nadelectronics.com and download the corresponding owner's manual.
- Refer to the "QUICK SETUP GUIDE" section in the owner's manual for wired or wireless setup connection.

IMPORTANT!

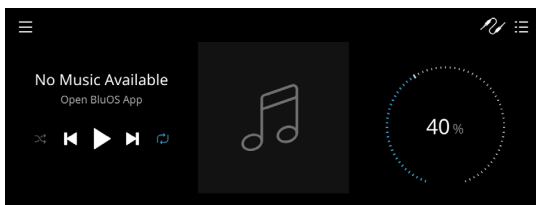
- For wired or wireless connection to be established, ensure that a broadband router that supports Ethernet and/or Wi-Fi standard is setup and available.
- During upgrade process, the front panel display will appear inactive or have no display - this is normal. Do not interfere and let the upgrade process run its course.
- Firmware version details shown are for reference only.
- This M10 V2 Internet Update Guideline is subject to change without notice. Check the M10 V2 product page for the latest Internet Update Guideline.

INTERNET UPDATE

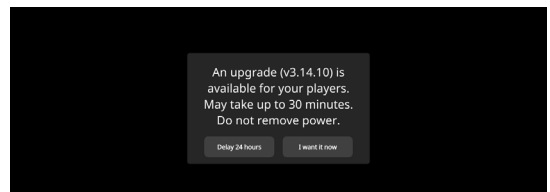
Your M10 V2 must be updated to the latest firmware right out of the box. For outright firmware update, setup your M10 V2 to be connected wired or wirelessly to your home network. **Initiate internet update via either Front Panel Display or BluOS App.**

INTERNET UPDATE VIA FRONT PANEL DISPLAY

- 1 With wired or wireless network connection established and your M10 V2 connected to a live mains power outlet, press the rear panel Standby button to switch the unit from standby to operating mode.
- 2 Front panel display will illuminate and show default display as below.



- 3 Wait for a few minutes and an upgrade prompt advice will appear in the front panel display.



Select "I want it now" to initiate upgrade procedure.

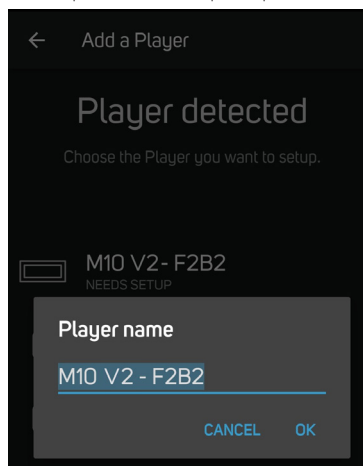
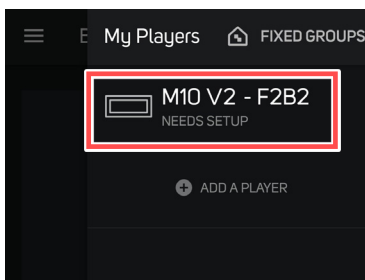
IMPORTANT!

If the pop-up upgrade notice does not appear within 10 minutes, your M10 V2 has the latest firmware version already and does not need any upgrade. Proceed to use and enjoy your M10 V2.

- 4 Internet update will proceed automatically. No further action is required. Internet update is completed when your unit is rebooted and default front panel display is shown again.

INTERNET UPDATE VIA BluOS APP

- 1 Download BluOS App.
- 2 Ensure that BluOS App and your M10 V2 are connected to the same network.
- 3 Open BluOS App and look for your M10 V2 ("M10 V2-F2B2" in this example) from the Player Selection drawer (right side of the BluOS App).
- 4 If you are setting up your M10 V2 wireless connection, the process will also include wireless connection setup . A "NEEDS SETUP" prompt or similar is shown. Select "M10 V2-F2B2" to start wireless connection setup and firmware update process.

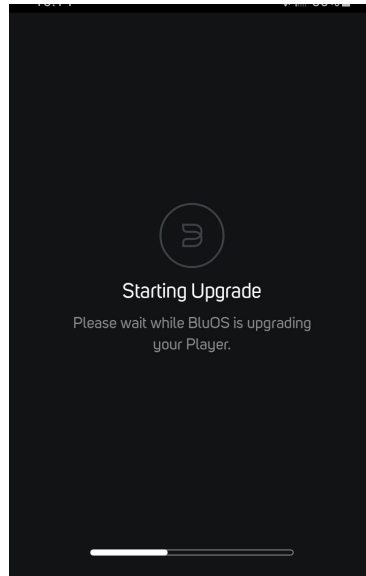
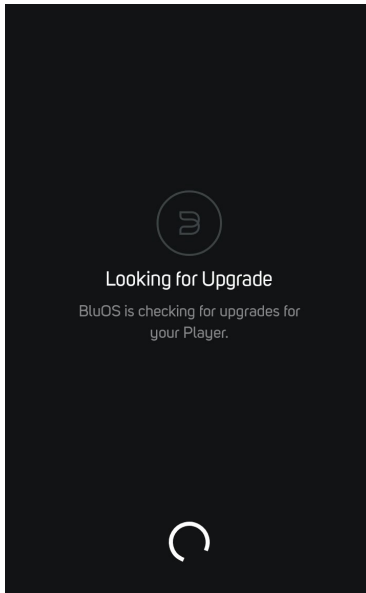




M10 V2 Internet Update Guidelines



5



6 Internet update will proceed automatically. No further action is required. Internet update is completed when your unit is rebooted, default front panel display is shown and BluOS App shows "Setup Complete".

