

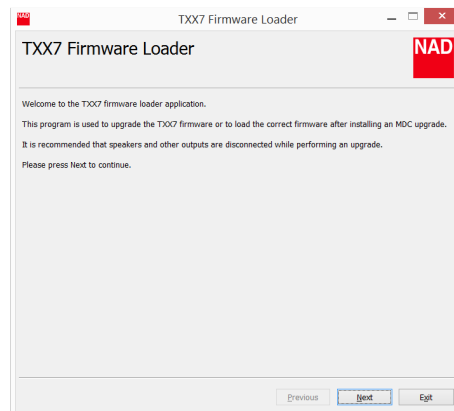
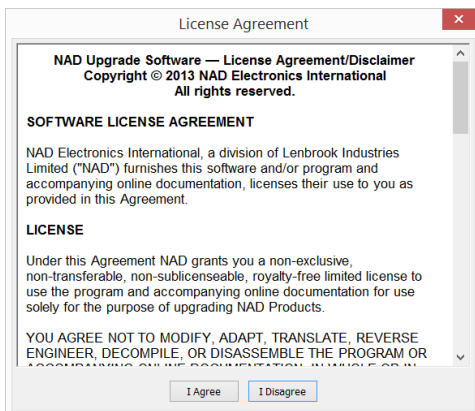


TXX7 SOFTWARE UPGRADE PROCEDURE

MODEL NUMBER	T187, T757/V2, T777, T787
REFERENCE NUMBER	TD2014-11
RELEASE DATE	28, April, 2014

Step 1. Download the software from the NAD website. Install and run the Txx7 Firmware loader.

Follow the prompts at each stage.



Step 2. Using an RS-232 cable, connect the PC/Windows 7/XP/8 to the Receiver. Power on the Receiver and run the firmware loader.

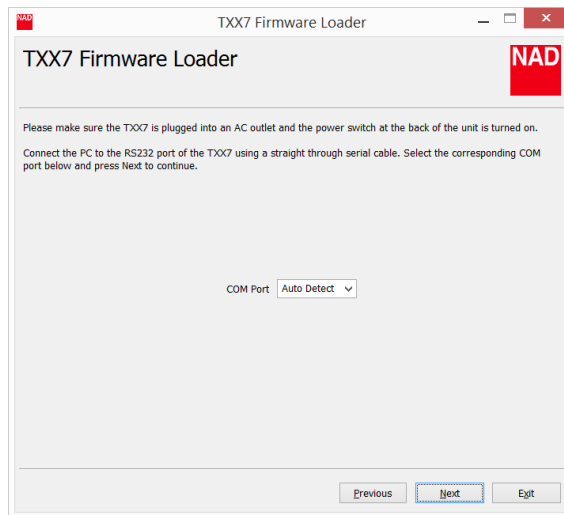




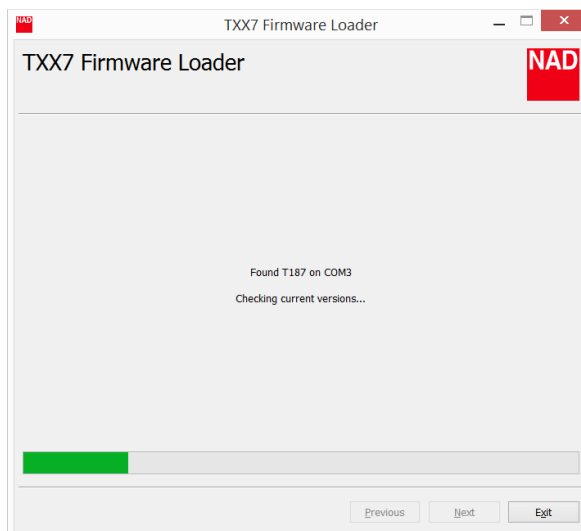
TXX7 SOFTWARE UPGRADE PROCEDURE

MODEL NUMBER	T187, T757/V2, T777, T787
REFERENCE NUMBER	TD2014-11
RELEASE DATE	28, April, 2014

Step 3. The program will prompt to do an Auto detection to connect to your computer Com Port,
Select “Next” to continue.



Step 4. The Software will auto scan the unit’s current software versions.



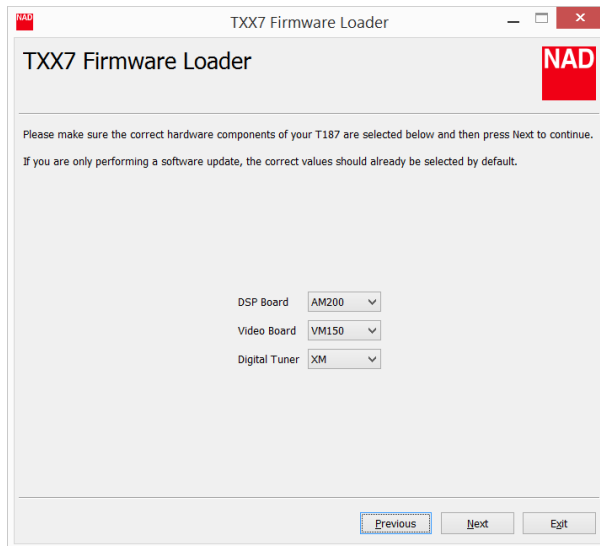


TXX7 SOFTWARE UPGRADE PROCEDURE

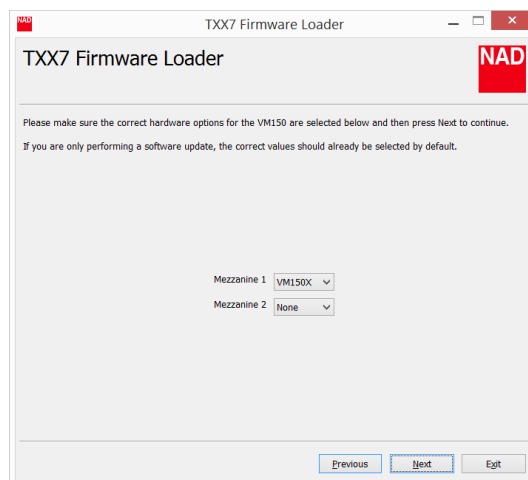
MODEL NUMBER	T187, T757/V2, T777, T787
REFERENCE NUMBER	TD2014-11
RELEASE DATE	28, April, 2014

Step 5. Once the program auto detects and confirms the current installed boards, confirm the selections and proceed to the next step.

If you are unsure which MDC modules or hardware is installed in your unit, please contact your local NAD dealer for assistance.



Step 6. Once again, the program will auto detect and confirm the current AUX installed cards, confirm the selections. If you are unsure which MDC modules or hardware is installed in your unit, please contact your local NAD dealer for assistance. Select “Next” to continue.

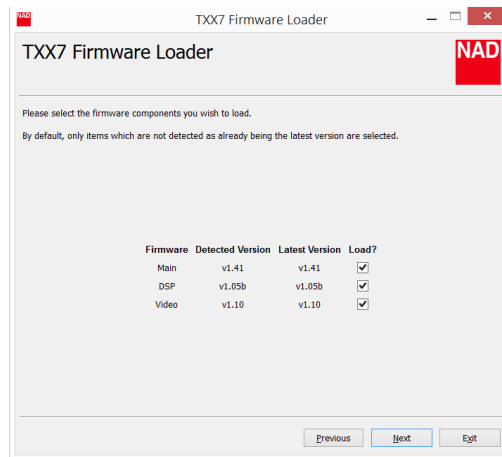




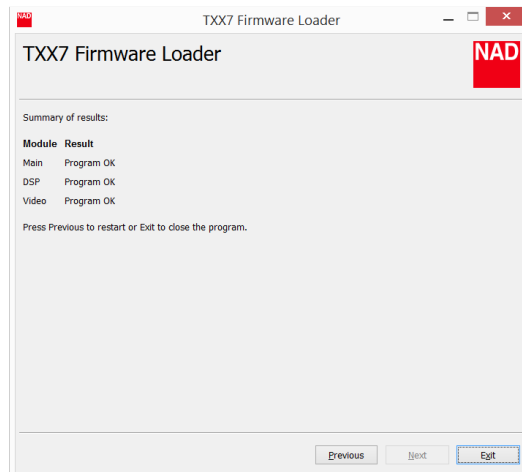
TXX7 SOFTWARE UPGRADE PROCEDURE

MODEL NUMBER	T187, T757/V2, T777, T787
REFERENCE UMBER	TD2014-11
RELEASE DATE	28, April, 2014

Step 7. The program will then auto detect the firmware installed on the unit and the recommended version upgrade. Click “Next” upon reviewing.



Step 9. Once the upgrade process has been completed, the below screen will be displayed. We recommend that you perform a factory reset (see below) to initialize the software into the unit.



FACTORY RESET- Press and Hold the front panel <Source + Source> buttons together until the VFD display the software version.

Note: Audyssey Auto Calibration settings along with other stored presets and settings will all be deleted upon restoring your T XX7 to its factory defaults.